



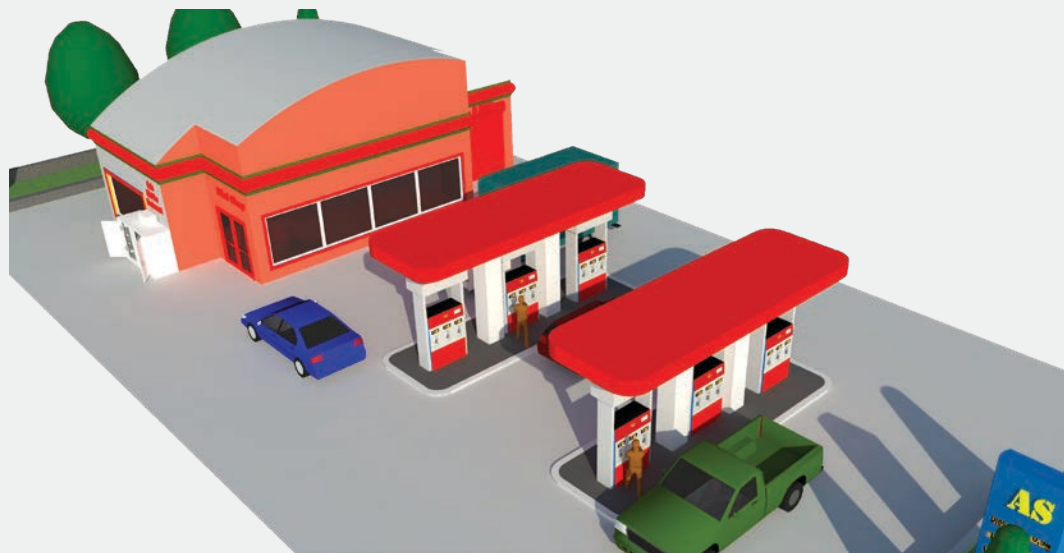
# C-Store Product Guide

## S100 Reach-In Storage Freezers



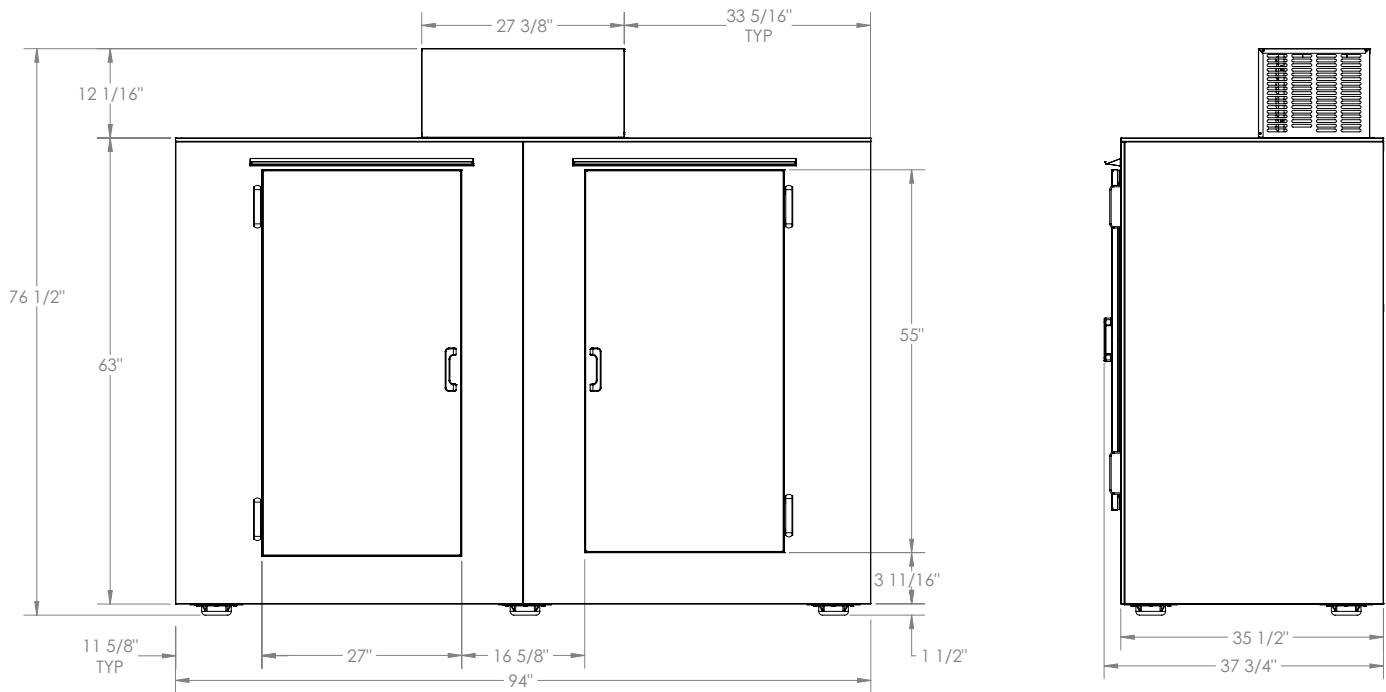
### Features/Benefits:

- **Utilize the freezer wherever you want, whether that's indoors or outdoors.**
  - Manufactured with durable galvanized steel, water-tight lock-form seam construction for maximum performance in both indoor and outdoor locations.
- **Built to last and we know it will. We've been manufacturing Indoor & Outdoor Ice Merchandisers for 65+ years.**
  - Features two-part acrylic polyurethane coating and galvanized top-coated steel doors to maximize corrosion resistance.
- **Small on the outside, but big on the inside to optimize space utilization.**
  - Over 90 cubic of interior freezer storage space with only roughly an 8ft x 3ft footprint.
- **Easily adjustable, heavy-duty shelving to allow for the storage of different sized goods.**
  - Eight, fully adjustable, pilaster-style shelving – capable of supporting up to 100lbs per shelf.
- **Custom options and quick lead times.**
  - Made in the USA by Leer employee-owners to ensure you get the product you need.



# S100

## Reach-In Storage Freezers



### Product Specifications:

- **Exterior Dimensions:** 94"W x 76.5"H x 35.5"D
- **Interior Capacity:** 90 Cubic Feet
- **Operating Temperature:** -10° - 0°F
- **Applications:** Indoor and outdoor
- **Shelving:** 8 adjustable shelves with a max weight of 100lbs
- **Weight:** 650 lbs (600 lbs without shelving)
- **Electrical Requirements:** 115v/60Hz/13 Amps
- **Manufactured:** USA by Leer's employee-owners
- **Certifications:** UL, CE, DOE Registered, NSF (upon request)
- **Warranty:** Compressor 5 Years, Parts 1 Year, Labor 90 Days

Leer has been designing, building and improving ice merchandisers since 1952. We keep a large inventory of finished goods and replacement parts on hand at all times. Over 50 models of merchandisers, including cash-less self-vending machines are available from stock and through our distribution partners.



*An Employee Owned Company*

**Leer Inc.**  
 206 Leer St.  
 New Lisbon, WI 53950  
 Phone: 800.766.5337  
 Fax: 608.562.6022  
[www.leerinc.com](http://www.leerinc.com)