



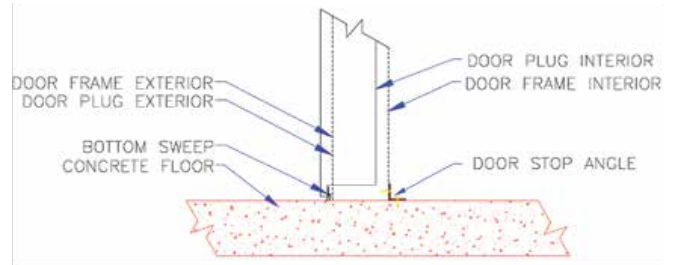
Floor Standards & Details

Wood Rail Walk-In Coolers & Freezers



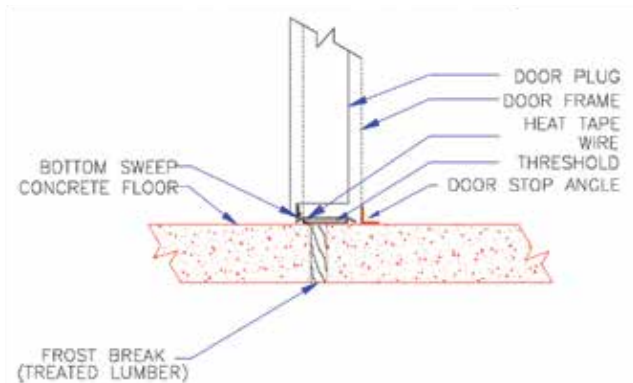
Typical Floor Starter Panel

A typical Carroll Coolers floor panel consists of 4" of polyurethane and 5/8" plywood that is covered with .050 smooth aluminum. The floor panels have an overall thickness of 4 5/8". This floor is rated for a uniformly distributed load of 800 pounds per square foot.



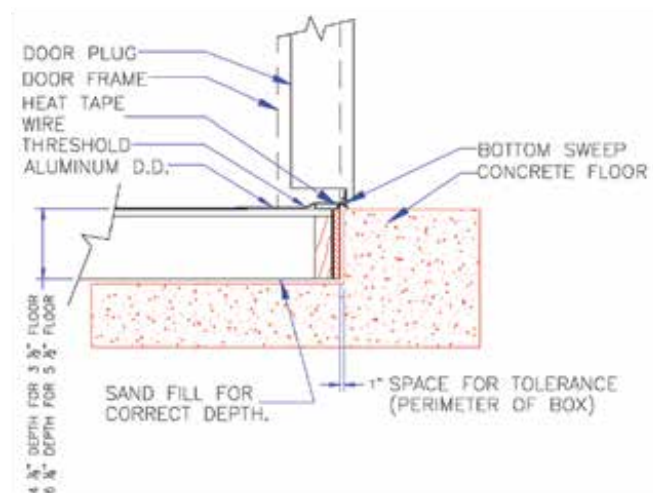
Door Leg Anchor

All cooler or freezer door frames must be anchored to the interior floor with the door stop angle furnished by Carroll Coolers. Door and frame with concrete method is shown to the left. It is necessary to make sure the door jambs are plumb, level and sealing properly prior to final fastening of the door stop angle.



Freezer Threshold Without Floor

When a Carroll Coolers freezer does not have a pre-fabricated floor it is necessary to insulate under the concrete. (There are other drawings in this section that show the proper method to insulate under concrete.)

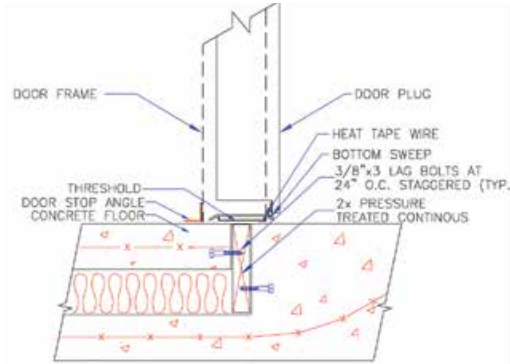


Recessed Floor

Recessed floors are sometimes required. An example is shown here.

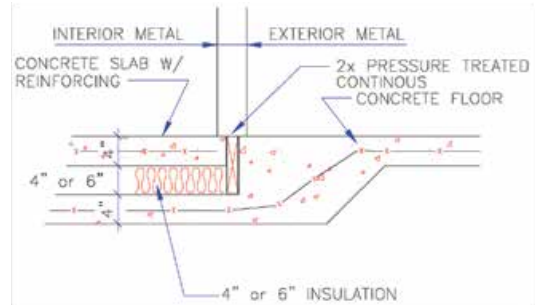
Floor Standards & Details

Wood Rail Walk-In Coolers & Freezers



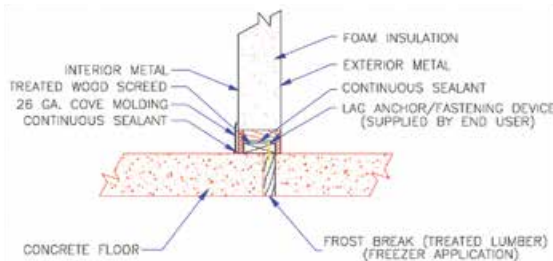
Typical Concrete Insulated Thru Door

There are various methods of insulating a concrete floor. In some cases ventilation beneath the concrete is needed, depending on the temperature and the size of the walk-in. We will be glad to offer our assistance in the design of the insulated floor, but the final decision needs to be made by a qualified engineer that is familiar with local codes or conditions.



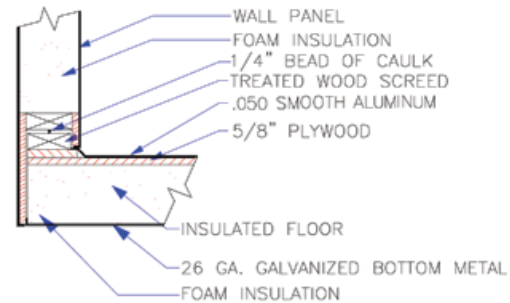
Typical Concrete Insulated

Typically, when a floor is subjected to a heavy rolling load, a concrete surface is preferable. When installing a freezer, it is essential that the concrete be insulated. This illustration shows a typical method to insulate below the concrete wearing surface. (This suggested method does not address local codes or conditions. Consult a local engineer for final design.)



Walk-in with Wood Screed

Most coolers do not need a manufactured floor. In these coolers, a treated wood screed is used so the walls can be fastened to the existing floor. Other methods such as vinyl screed are available.



Walk-in with Insulated Floor

Carroll Coolers floor is designed for a uniformly distributed load of 800 pounds per square foot. Higher weight requirements require additional strength and are quoted on an individual basis.

Since 1987 the people at CCI have been committed to providing you with a top quality walk-in and the very best service in the industry - both before and after the sale.

At Carroll Coolers, we take great pride in serving our customers' needs in an accurate and timely fashion. Plus, we have the industry's best on-time shipping history for quality and satisfaction guaranteed.



Carroll Coolers
 19705 Highway 30 W
 Carroll, IA 51701
 Phone: 800.764.6834
www.carrollcoolers.com